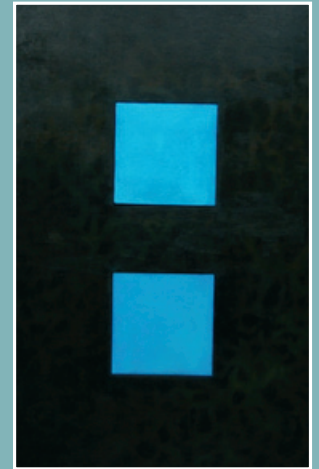
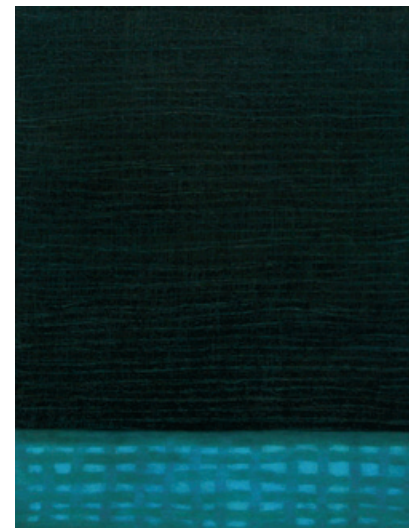


My works of art and studio practice negotiate the possibilities of articulating the aesthetic potential of 'embodied' experience as an interior and exterior spatial concept. As a practicing artist, my work navigates its subject matter to illustrate the physical and material characteristics of medium and materials in order to affect a bodily response. The picture plane and its support, the lens of the camera, and poetic notations are vehicles that demonstrate an empirical approach to representation. I am aware of the significant role of process in the conceptual development of an artworks' genesis, particularly when chance fuses with the material characteristics of the medium; it is at this juncture where the potential for new visual conversations come into play. The drama of this creativity reflects the artist at work, reconstructing representation.

Migration, place and felt experience embody my approach. The physical experience of migration and a memory of place relocates visually onto the picture plane to redefine felt experience through material investigation. It is my experience that the body as a site of creativity, is at the crux of practice, one that infuses a sense of well-being, and one which becomes an evolving metaphor in my work. The phenomenon of felt experience, although difficult to quantify within traditional spheres of knowledge production, finds expression, through the actions of the brush, the marks on paper and the textual responses. Describing place resolutely locates individual experience as a justifiable source of artistic production.

Annemarie Murland



ABOVE

Annemarie Murland
Gesture v Colour
2011
oil on canvas on board
140 x 100 x 15cm

BOTTOM LEFT

Annemarie Murland
Multiple Weave (Micro v Macro)
2011
oil on canvas
90 x 70 x 8cm

OPPOSITE

Annemarie Murland
Sgraffito: Cool Veil
2011
oil on canvas on board
140 x 100 x 10cm

**Annemarie
Murland**

STRUCTURE BECOMES IMAGE



ABOVE
Annemarie Murland
Weaving Paint v Texture
2011
oil on belgian linen
60 x 60cm

COVER
Annemarie Murland
Weaving Paint, Continuous Line - Cool Veil (detail)
2011
oil on canvas
90 x 70 x 8cm

Structure Becomes Image continues until 15 October

THE UNIVERSITY
GALLERY

THE UNIVERSITY OF NEWCASTLE CALLAGHAN 2308

E gallery@newcastle.edu.au
W www.newcastle.edu.au/universitygallery
T + 61 02 4921 5255
OPEN Wednesday – Saturday 12 noon – 6pm or by appointment



Annemarie Murland

STRUCTURE BECOMES IMAGE



THE UNIVERSITY OF
NEWCASTLE
AUSTRALIA



Exhibition Dates **28 SEPTEMBER -15 OCTOBER 2011**

THE UNIVERSITY
GALLERY